



GRANDVIEW FARM

Madison County Locations

By Townships

IN PARCEL NUMBERED ORDER

As of January, 2024

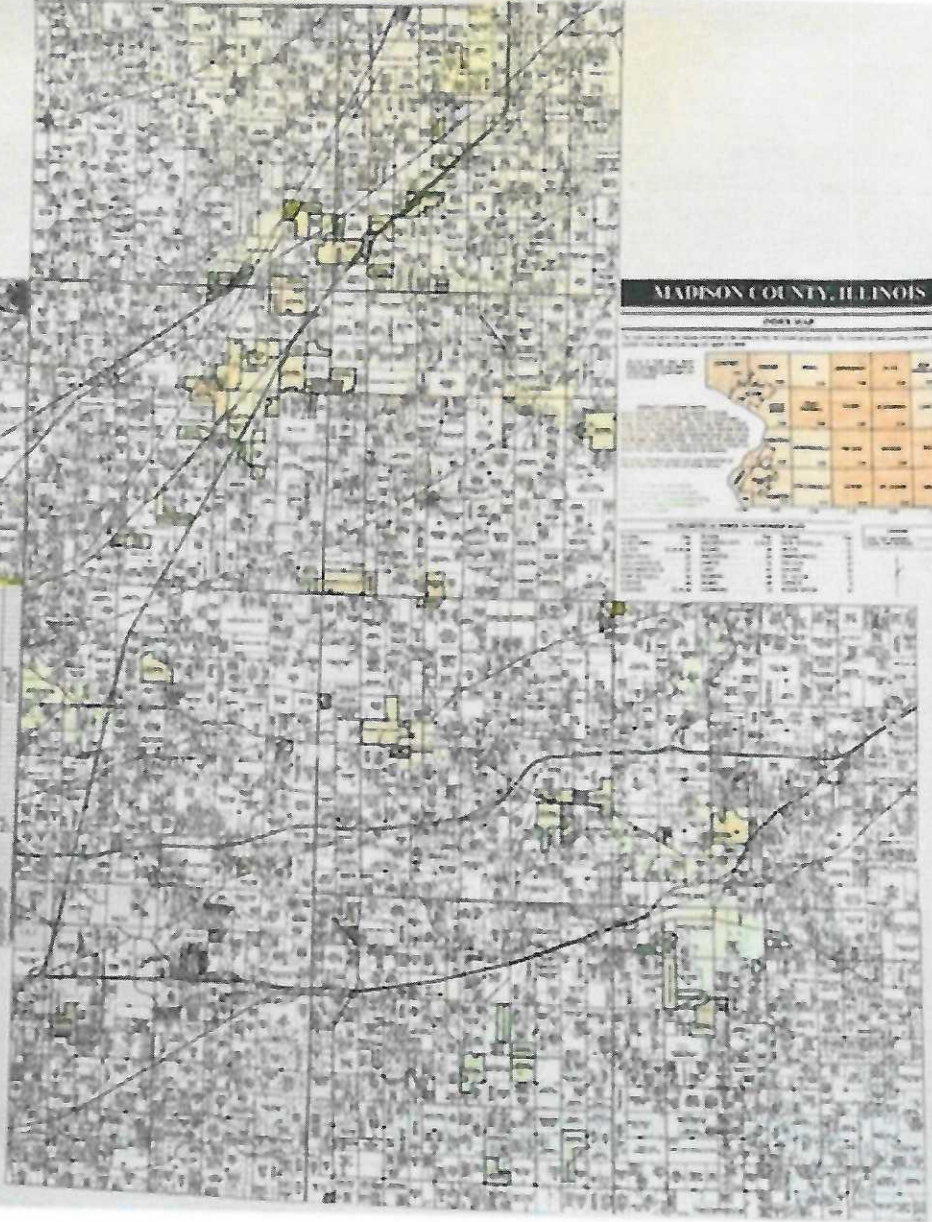


GRANDVIEW FARM

1000 WEST MAIN ST. MOUNTAIN VIEW, ILL.
GRANDVIEW FARM, MOUNTAIN VIEW, ILL.
DR. WILLIAM H. BROWN, MOUNTAIN VIEW, ILL. PHONE: 662-1111
OTHER SUBSIDIARIES: 700 E. 10TH ST. PH: 662-1111



TRACT	ACRES	OWNER
1	1.2	Grandview Farm
2	1.5	Grandview Farm
3	1.8	Grandview Farm
4	2.1	Grandview Farm
5	2.4	Grandview Farm
6	2.7	Grandview Farm
7	3.0	Grandview Farm
8	3.3	Grandview Farm
9	3.6	Grandview Farm
10	3.9	Grandview Farm
11	4.2	Grandview Farm
12	4.5	Grandview Farm
13	4.8	Grandview Farm
14	5.1	Grandview Farm
15	5.4	Grandview Farm
16	5.7	Grandview Farm
17	6.0	Grandview Farm
18	6.3	Grandview Farm
19	6.6	Grandview Farm
20	6.9	Grandview Farm
21	7.2	Grandview Farm
22	7.5	Grandview Farm
23	7.8	Grandview Farm
24	8.1	Grandview Farm
25	8.4	Grandview Farm
26	8.7	Grandview Farm
27	9.0	Grandview Farm
28	9.3	Grandview Farm
29	9.6	Grandview Farm
30	9.9	Grandview Farm
31	10.2	Grandview Farm
32	10.5	Grandview Farm
33	10.8	Grandview Farm
34	11.1	Grandview Farm
35	11.4	Grandview Farm
36	11.7	Grandview Farm
37	12.0	Grandview Farm
38	12.3	Grandview Farm
39	12.6	Grandview Farm
40	12.9	Grandview Farm
41	13.2	Grandview Farm
42	13.5	Grandview Farm
43	13.8	Grandview Farm
44	14.1	Grandview Farm
45	14.4	Grandview Farm
46	14.7	Grandview Farm
47	15.0	Grandview Farm
48	15.3	Grandview Farm
49	15.6	Grandview Farm
50	15.9	Grandview Farm
51	16.2	Grandview Farm
52	16.5	Grandview Farm
53	16.8	Grandview Farm
54	17.1	Grandview Farm
55	17.4	Grandview Farm
56	17.7	Grandview Farm
57	18.0	Grandview Farm
58	18.3	Grandview Farm
59	18.6	Grandview Farm
60	18.9	Grandview Farm
61	19.2	Grandview Farm
62	19.5	Grandview Farm
63	19.8	Grandview Farm
64	20.1	Grandview Farm
65	20.4	Grandview Farm
66	20.7	Grandview Farm
67	21.0	Grandview Farm
68	21.3	Grandview Farm
69	21.6	Grandview Farm
70	21.9	Grandview Farm
71	22.2	Grandview Farm
72	22.5	Grandview Farm
73	22.8	Grandview Farm
74	23.1	Grandview Farm
75	23.4	Grandview Farm
76	23.7	Grandview Farm
77	24.0	Grandview Farm
78	24.3	Grandview Farm
79	24.6	Grandview Farm
80	24.9	Grandview Farm
81	25.2	Grandview Farm
82	25.5	Grandview Farm
83	25.8	Grandview Farm
84	26.1	Grandview Farm
85	26.4	Grandview Farm
86	26.7	Grandview Farm
87	27.0	Grandview Farm
88	27.3	Grandview Farm
89	27.6	Grandview Farm
90	27.9	Grandview Farm
91	28.2	Grandview Farm
92	28.5	Grandview Farm
93	28.8	Grandview Farm
94	29.1	Grandview Farm
95	29.4	Grandview Farm
96	29.7	Grandview Farm
97	30.0	Grandview Farm
98	30.3	Grandview Farm
99	30.6	Grandview Farm
100	30.9	Grandview Farm



MADISON COUNTY, ILLINOIS



INDEX MAP

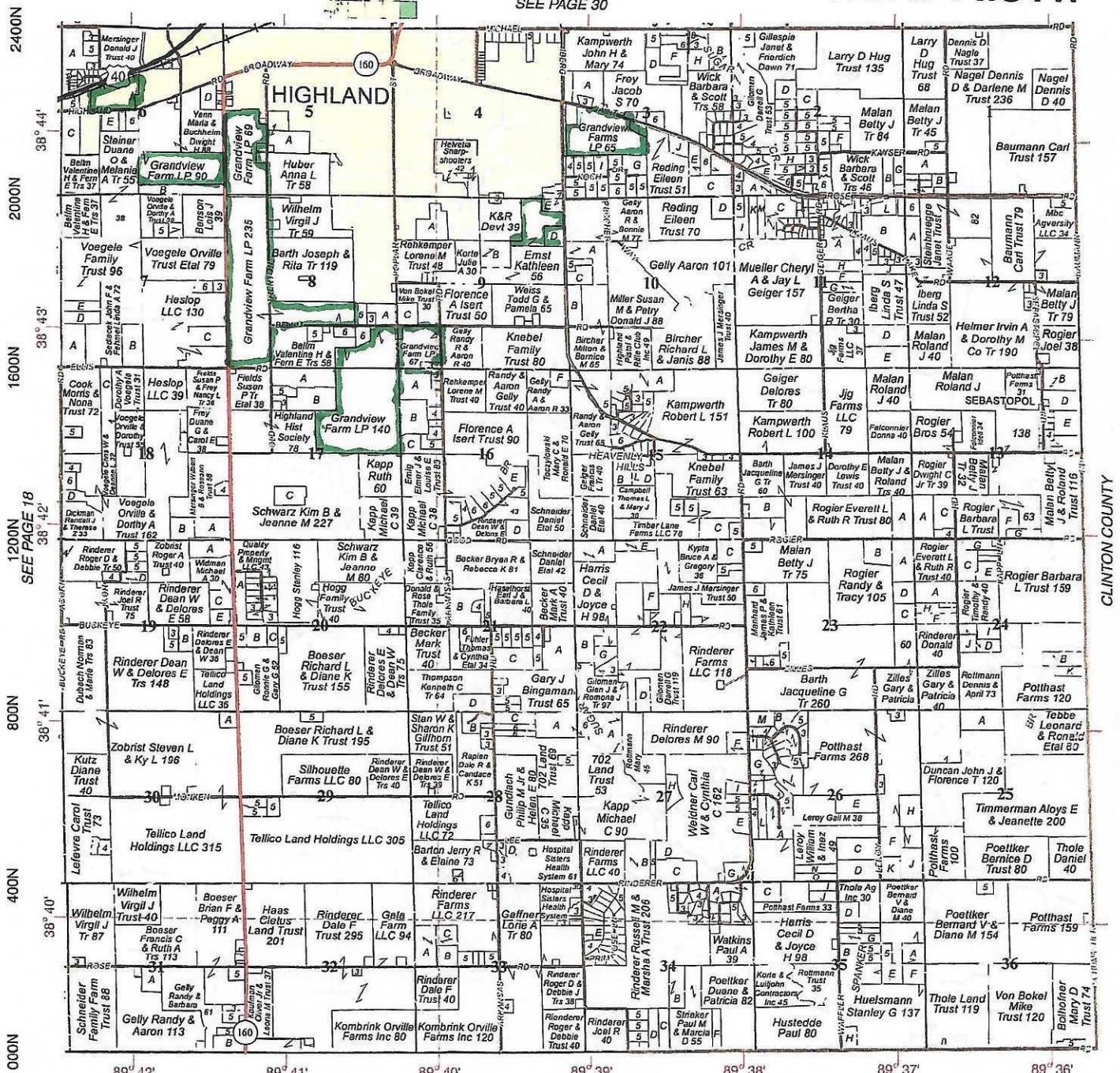
Scale: 1 inch = 1 mile

HELVETIA

Refer to pages 60 & 61 for keyed parcels

T.3N.-R.5W.

SEE PAGE 30



© 2019 Rockford Map Pubs., Inc.
12000E 12400E

CLINTON COUNTY Madison County, IL
12800E 13200E 13600E 14000E 14400E

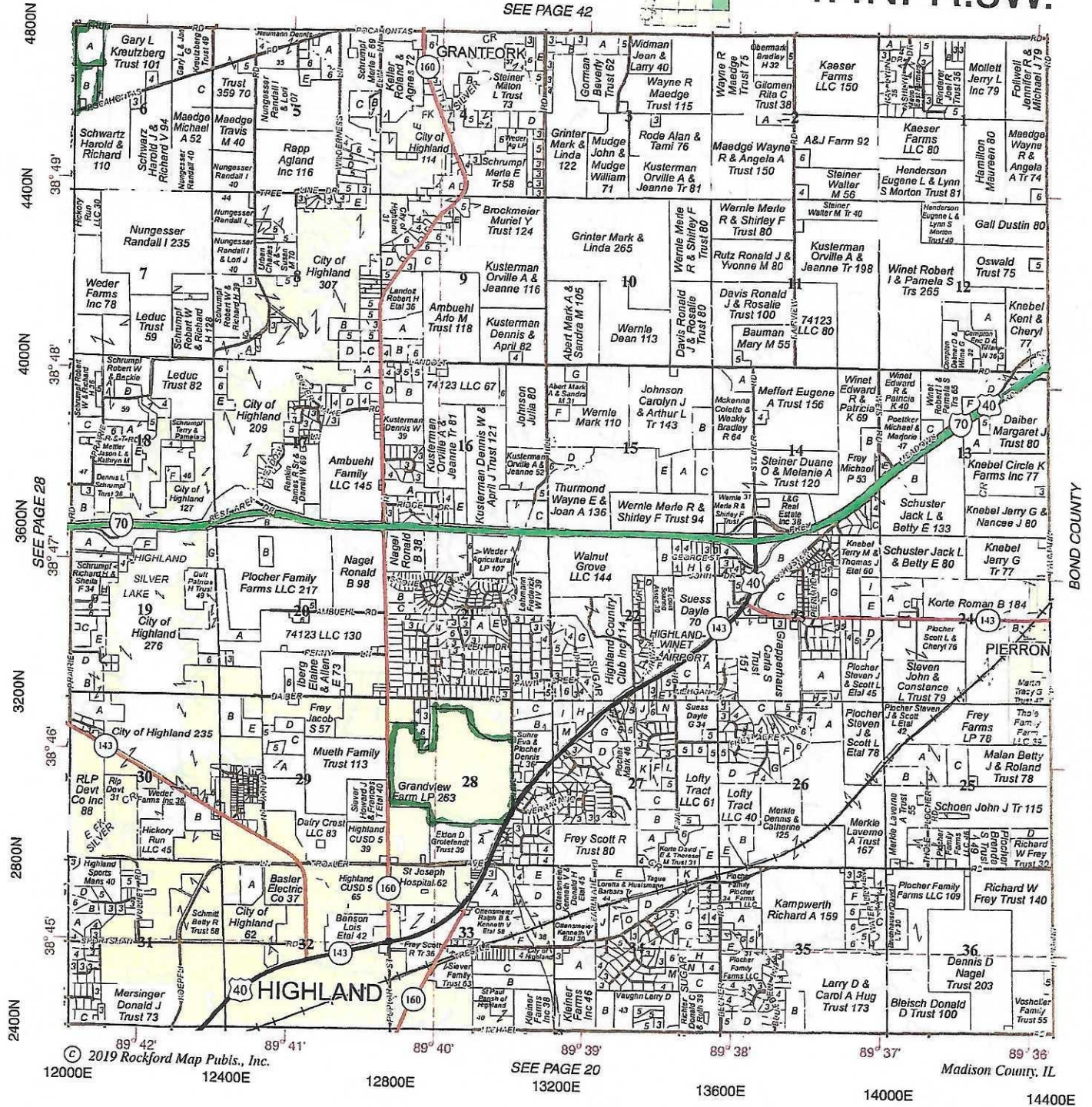
<u>Tax ID#</u>	<u>Farm Production Unit(s)</u>	<u>Total Acres</u>	<u>Tax Acres Cropland & Other Farmland</u>	<u>Cropland Only</u>	<u>Acres in Production In this Primary Farm Unit</u>	<u>Weighted PI Total Acres From Tax</u>
Helvetia Township						
01-1-24-03-00-000-013	Korte	65.4	62.5	48.7	55.1	91.4
01-1-24-05-00-000-001	Jakel Main(Part)	31.7	31.7	31.4	222.1	106.1
01-1-24-05-00-000-002	Jakel Main (Part)	1.5	1.5	1.5	222.1	103.5
01-1-24-05-00-000-007	Jakel Main (Part)	35.8	35.8	35.8	222.1	111.6
01-1-24-06-00-000-017.002	Weder Old Rt 40	28.5	28.5	28.5	23.6	112
01-1-24-06-00-000-027.001	Nickerson (Part)	60	58.2	56.6	59	107.5
01-1-24-08-00-000-001	Jakel Main (Part)	36.7	36.7	36.7	222.1	116
01-1-24-08-00-000-001.001	Jakel Main (Part)	0.8	0.8	0.8	222.1	116
01-1-24-08-00-000-003	Jakel Main (Part)	44.1	44.1	43	222.1	116.8
01-1-24-08-00-000-003.001	Jakel Main (Part)	31.3	31.3	31.3	222.1	102.9
01-1-24-08-00-000-003.002	Jakel Main (Part)	38.5	38.5	38.5	222.1	112.1
01-1-24-08-00-000-005	Jakel N of Bellm Rd	40	40	33.5	35.7	106.3
01-1-24-08-00-000-009.001	Bellm North (Part)	39	38.1	36.6	73.6	97.7
01-1-24-08-00-000-009.002	Bellm North (Part)	4.6	4.4	4.4	73.6	97.1
01-1-24-09-00-000-007.004	Iberg	31.6	31.6	31.6	32.3	94
01-1-24-09-00-000-014	Bellm North (Part)	28.6	26.6	26.6	73.6	92.1
01-1-24-09-00-000-014.001	Bellm North (Part)	1	0	0	73.6	0
01-1-24-09-00-000-014.004	Bellm North (Part)	5.8	5.4	5.4	73.6	94.5
01-1-24-17-00-000-005	Bellm South	140	136.6	97.9	95.8	92.3

SALINE

Refer to page 64 for keyed parcels

T.4N.-R.5W.

SEE PAGE 42



© 2019 Rockford Map Pubs., Inc. SEE PAGE 20 Madison County, IL

12000E 12400E 12800E 13200E 13600E 14000E 14400E

2400N 2800N 3200N 3600N 4000N 4400N 4800N

89° 42' 89° 41' 89° 40' 89° 39' 89° 38' 89° 37' 89° 36'

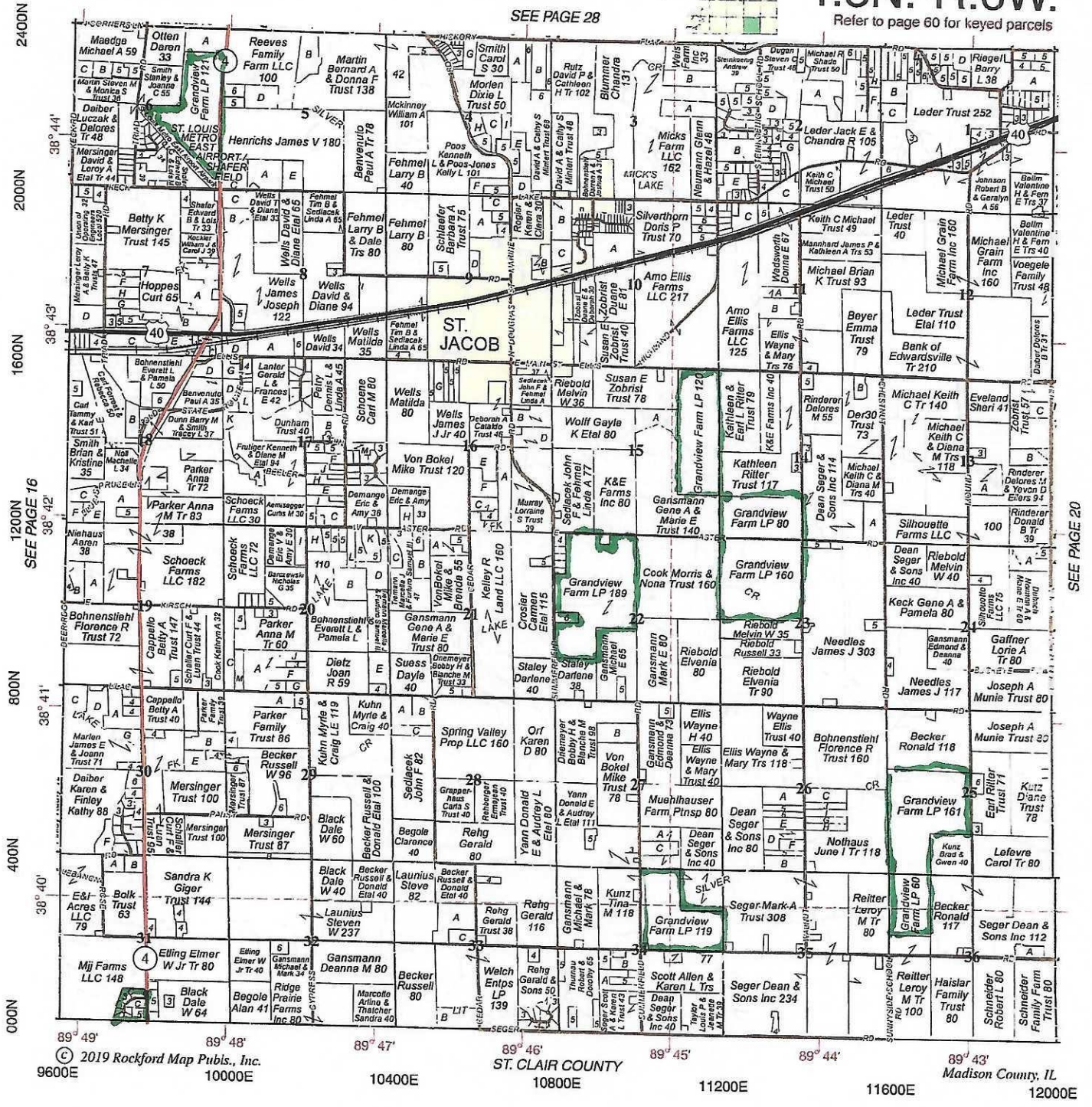
<u>Tax ID#</u>	<u>Farm Production Unit(s)</u>	<u>Total Acres</u>	<u>Tax Acres</u> <u>Cropland &</u> <u>Other Farmland</u>	<u>Cropland Only</u>	<u>Acres in</u> <u>Production</u> <u>In this Primary</u> <u>Farm Unit</u>	<u>Weighted PI</u> <u>Total Acres</u> <u>From Tax</u>
<u>Saline Township</u>						
02-1-18-06-00-000-001	Heitman Fruit Rd/Kreutzberg (part)	26.5	25	25	103.4	102
02-1-18-28-00-000-001.003	Winet-Sievers/Plummer (part)	125.7	124	124	277	102
02-1-18-28-00-000-002.002	Winet-Sievers/Plummer (part)	26.1	24.1	24.1	277	99.1
02-1-18-28-00-000-004	Winet-Sievers/Plummer (part)	110.9	110.9	109.1	277	100.1

ST. JACOB

T.3N.-R.6W.

SEE PAGE 28

Refer to page 60 for keyed parcels



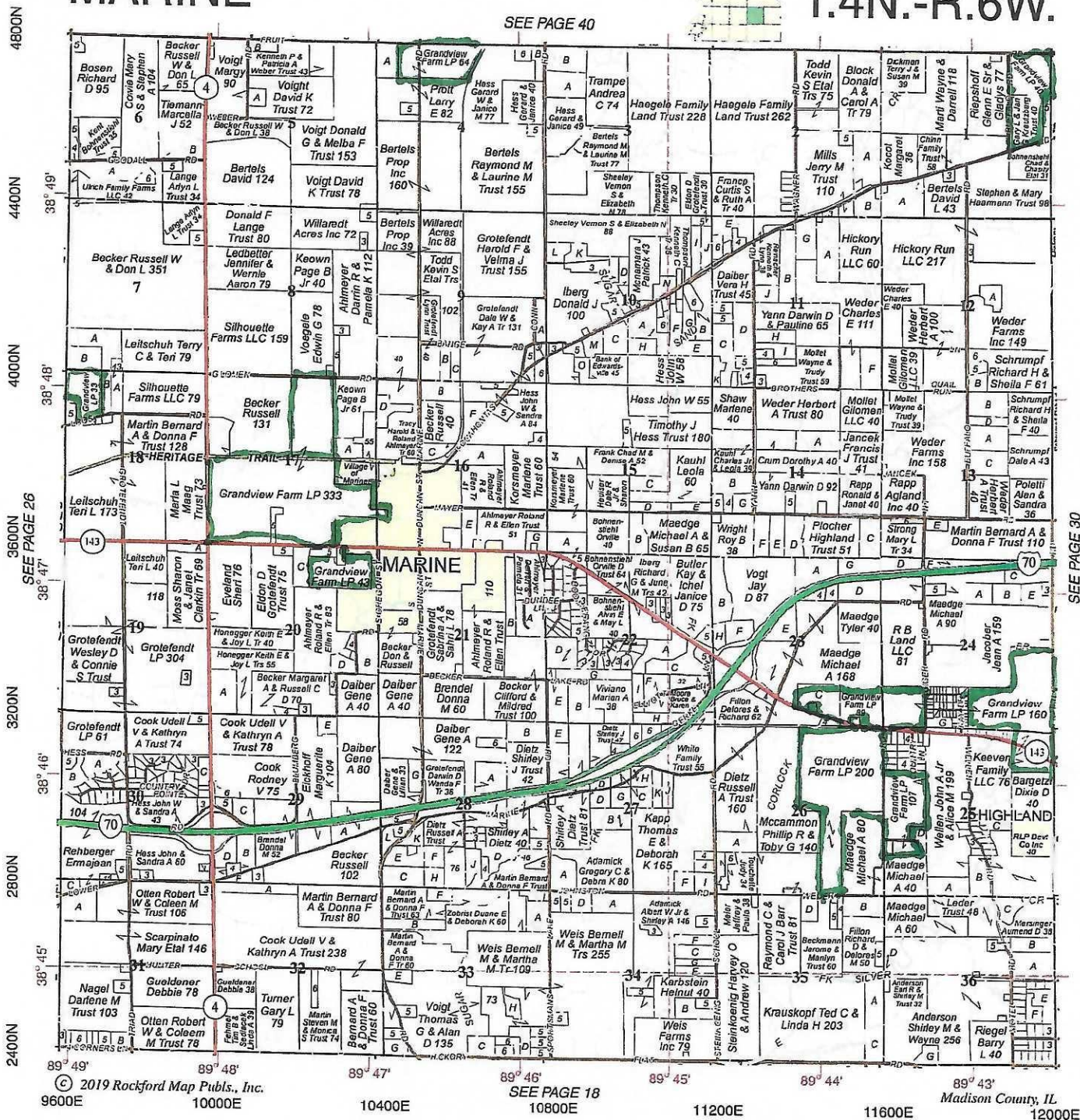
<u>Tax ID#</u>	<u>Farm Production Unit(s)</u>	<u>Total Acres</u>	<u>Tax Acres Cropland & Other Farmland</u>	<u>Cropland Only</u>	<u>Acres in Production In this Primary Farm Unit</u>	<u>Weighted PI Total Acres From Tax</u>
St. Jacob Township						
05-1-23-06-00-000-004	Grotefendt/Shafer (part)	60	60	60	120.7	101.9
05-1-23-06-00-000-008.004	Grotefendt/Shafer (part)	61.4	61.4	59.2	120.7	100.8
05-1-23-14-00-000-008	Frutiger N of Aster	80	80	79.5	80.9	111
05-1-23-15-00-000-003	Frutiger S of Ellis	120	116.3	113.4	105.7	101.4
05-1-23-22-00-000-001	Gusewelle S	65.5	65.5	63.2	60.3	111.7
05-1-23-22-00-000-002	Gusewelle N	124	118.3	116.5	117.5	101.2
05-1-23-23-00-000-001	Frey (part)	80	78.3	78.3	156.8	111.2
05-1-23-23-00-000-002.001	Frey (part)	80	79.7	79.7	156.8	110.7
05-1-23-25-00-000-001.001	Bluemound Central (part)	40.8	40.8	38.2	62.1	107.8
05-1-23-25-00-000-006	Bluemound Road (part)	120	120	118.3	95.1	115.1
05-1-23-34-00-000-003	Gross North, Gross South	118.8	116.5	116.5	113.2	100.9
05-1-23-36-00-000-001	Bluemound South (part)	40	39.3	39.3	60	115.6
05-1-23-36-00-000-002	Bluemound South (part)	20	20	20	60	116

MARINE

Refer to page 63 for keyed parcels

T.4N.-R.6W.

SEE PAGE 40



© 2019 Rockford Map Publs., Inc.

SEE PAGE 18

Madison County, IL

9600E 10000E 10400E 10800E 11200E 11600E 12000E

4800N
4400N
4000N
3600N
3200N
2800N
2400N

SEE PAGE 30

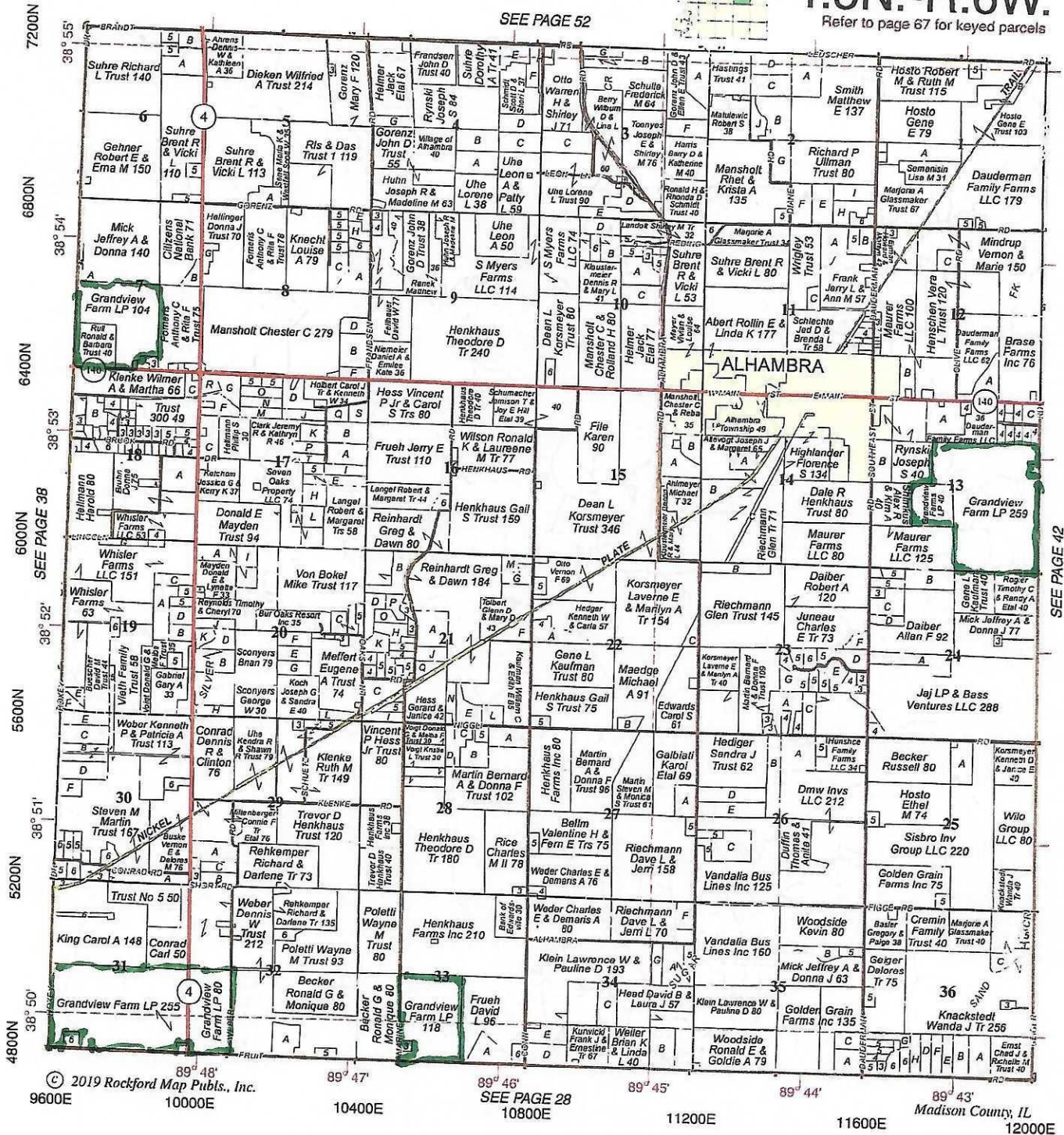
<u>Tax ID#</u>	<u>Farm Production Unit(s)</u>	<u>Total Acres</u>	<u>Tax Acres Cropland & Other Farmland</u>	<u>Cropland Only</u>	<u>Acres in Production In this Primary Farm Unit</u>	<u>Weighted PI Total Acres From Tax</u>
Marine Township						
06-1-17-01-00-000-004	Heitman Fruit Rd/Kreutzberg (part)	39.7	39.4	39.4	103.4	111.2
06-1-17-01-00-000-005.003	Heitman Fruit Rd/Kreutzberg (part)	39.9	38.8	38.8	103.4	109.2
06-1-17-04-00-000-002	Espenschied Wetlands SW	2	1.6	1.6	1.6	116
06-1-17-04-00-000-002.001	Espenschied SW	15.6	15.6	15.6	16.4	115.7
06-1-17-04-00-000-003	Espenschied SE (part)	34.6	34.6	34.6	45.6	113.2
06-1-17-04-00-000-004.002	Espenschied SE (part)	11.5	11.5	11.5	45.6	114.9
06-1-17-07-00-000-003.001	Bardelmeier (part)	19.6	19.6	17.4	83.8	94.1
06-1-17-16-17-301-001	Haegele NE (part)	1.7	1.7	1.7	27.6	103.7
06-1-17-17-00-000-003	Grandview - Near Voegele	77.5	77.5	76	78.6	108.5
06-1-17-17-00-000-006	Grandview-Borrow Pit,N of Pasture	227.6	207.5	199.3	188.9	99.7
06-1-17-17-00-000-006.001	Grandview - Home	5	0	0	0	0
06-1-17-17-00-000-008	Haegele SW, Haegele NE (part)	27.9	26.5	26.1	27.6	98.6
06-1-17-18-00-000-001.003	Bardelmeier (part)	33.5	33.5	33.5	83.8	100.3
06-1-17-20-00-000-006	Mugler (part)	13.6	13.6	13.6	45.5	100.9
06-1-17-20-00-000-006.003	Mugler (part)	4.5	4.5	4.5	45.5	100.2
06-1-17-20-02-201-017	Mugler (part)	24.7	24.7	24.7	45.5	97.2
06-1-17-23-00-000-016	Parkinson West,Parkinson E (part)	25	24.1	23	99.9	100.9
06-1-17-23-00-000-017	Parkinson East (part)	38.5	38.5	37.9	99.9	104.8
06-1-17-24-00-000-011	Landolt-Mesle North (part)	40	40	40	138.7	112.2
06-1-17-24-00-000-012	Parkinson East (part)	40	40	39.4	99.9	115.2
06-1-17-24-00-000-013	Landolt-Mesle North (part)	40	40	37.4	138.7	108.2
06-1-17-24-00-000-014	Landolt-Mesle South (part)	40	40	39.1	19.2	102.2
06-1-17-25-00-000-001	Hitz E of Weder	50.1	48.3	48.3	56.7	102.2
06-1-17-25-00-000-008	Landolt-Mesle North (part)	37.7	37.7	37.7	138.7	92.5
06-1-17-25-00-000-011	Parkinson East (part)	0.2	0	0	99.9	0
06-1-17-26-00-000-003	Hitz NE,SE, NW,SW, S Leg	200	195	192.5	184.8	97.4

ALHAMBRA

T.5N.-R.6W.

SEE PAGE 52

Refer to page 67 for keyed parcels



© 2019 Rockford Map Publs., Inc.

SEE PAGE 28

Madison County, IL

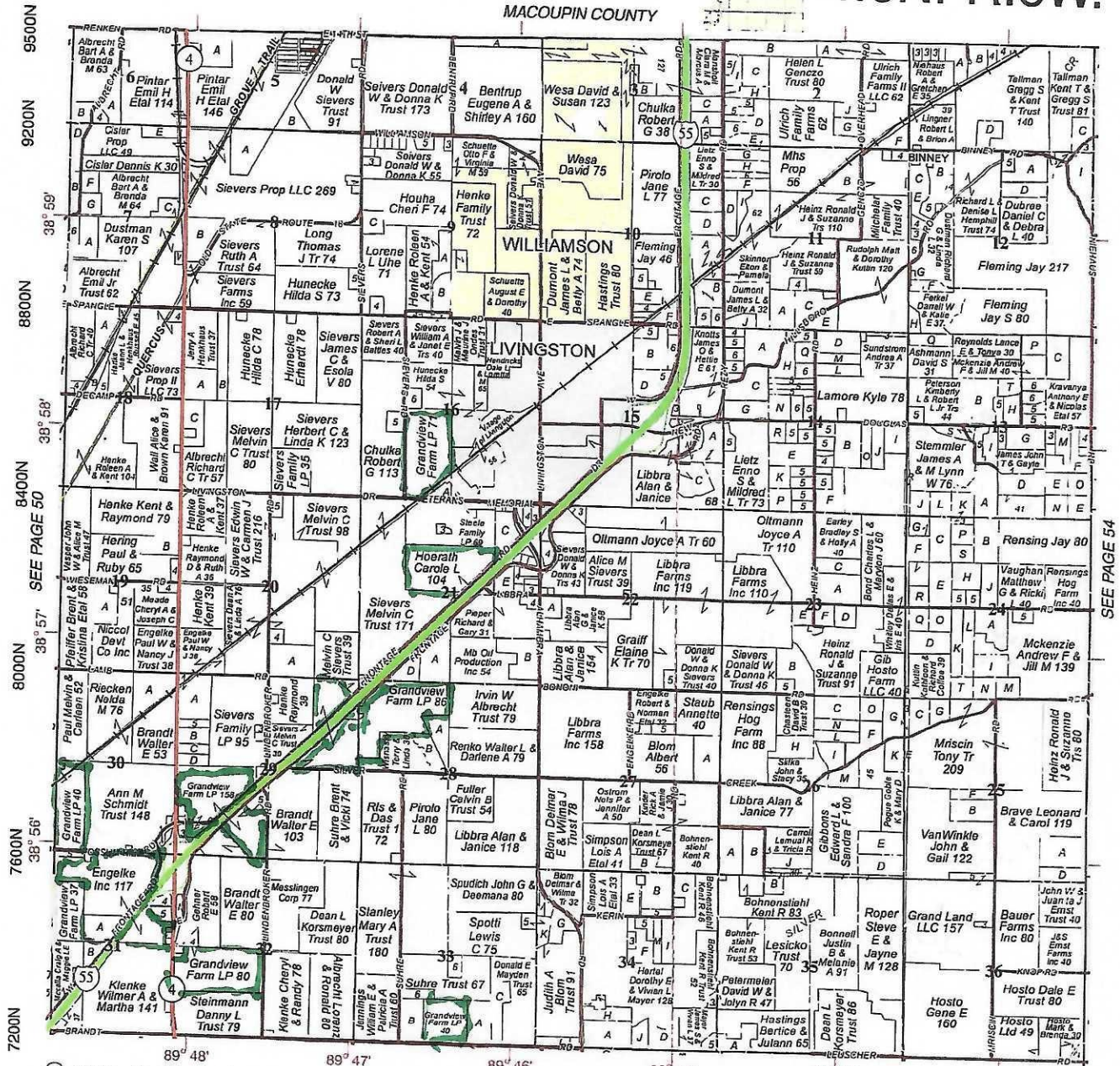
<u>Tax ID#</u>	<u>Farm Production Unit(s)</u>	<u>Total Acres</u>	<u>Tax Acres Cropland & Other Farmland</u>	<u>Cropland Only</u>	<u>Acres in Production In this Primary Farm Unit</u>	<u>Weighted PI Total Acres From Tax</u>
<u>Alhambra Township</u>						
07-1-11-07-00-000-006	Riechmann-Rull	103.9	101.9	89.3	135.5	104.4
07-1-11-07-00-000-007	Riechmann-Rull	40	40	40	135.5	113.1
07-1-11-13-00-000-004	Heitman Main (part)	78.6	76.5	74	284.5	90.6
07-1-11-13-00-000-004.001	Heitman Main (part)	40	37.1	31.2	284.5	91.1
07-1-11-13-00-000-004.002	Heitman Main (part)	160	158.8	157.5	284.5	97.5
07-1-11-13-00-000-005.001	Heitman Main (part)	20	20	20	284.5	96.4
07-1-11-31-00-000-005	Rapp Central	114.8	110.2	110.2	104.3	94.1
07-1-11-31-00-000-005.001	Rapp E of Ditch	63	60.7	60.7	68.7	96.7
07-1-11-31-00-000-006	Rapp W of Rt 4, Around House	77.5	75	75	71.5	100.7
07-1-11-32-00-000-009	Rapp E of Rt 4	80	80	80	78	110.4
07-1-11-33-00-000-005	Espenschied Wetlands NE	2.3	1.9	1.3	114.9	79.2
07-1-11-33-00-000-005.002	Espenschied NE	116.1	116.1	114.6	114.9	108.8

OLIVE

Refer to page 71 for keyed parcels

T.6N.-R.6W.

MACOUPIN COUNTY



© 2019 Rockford Map Publs., Inc.

SEE PAGE 40

SEE PAGE 54

Madison County, IL

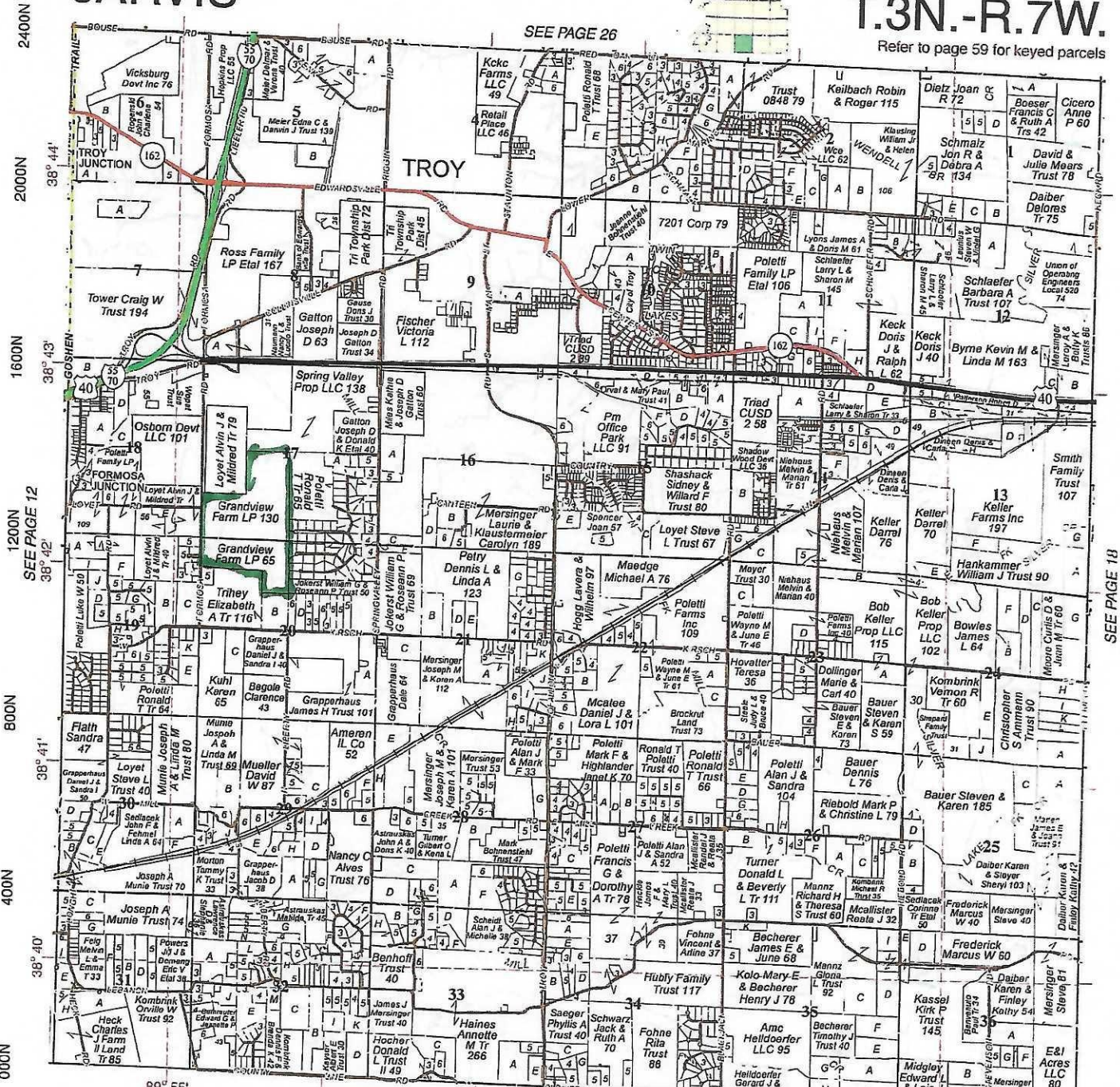
<u>Tax ID#</u>	<u>Farm Production Unit(s)</u>	<u>Total Acres</u>	<u>Tax Acres Cropland & Other Farmland</u>	<u>Cropland Only</u>	<u>Acres in Production In this Primary Farm Unit</u>	<u>Weighted PI Total Acres From Tax</u>
<u>Olive Township</u>						
08-1-05-16-00-000-008.002	Livingston	70.7	68	68	66.4	95.7
08-1-05-21-00-000-011	Hoerath	69.4	68.5	64.8	64.3	94.7
08-1-05-28-00-000-001	Sievers S of Hwy (part)	86.4	86.4	81.1	115.2	103.3
08-1-05-29-00-000-005.001	Sievers S of Hwy (part)	4.3	4.3	4.3	115.2	108
08-1-05-29-00-000-006	Sievers N of Hwy, S of Hwy (part)	56.5	56.5	56.4	22.8	109.2
08-1-05-29-00-000-007	Schlechte S/Engelke W of Rt 4 (part)	79.6	79	79	64.3	109.8
08-1-05-29-00-000-007.002	Schlechte North (part)	8	7.2	3.2	64.3	90.5
08-1-05-29-00-000-008	Schlechte North (part)	10.3	10.3	10.3	64.3	108
08-1-05-30-00-000-002	Knack N of RR (part)	3	2.8	2.8	112.9	101.5
08-1-05-30-00-000-005	Knack S of RR, N of RR (part)	40	38.9	36.3	112.9	108.6
08-1-05-31-00-000-002.002	Knack S of Road/Wond/Eng (part)	20.7	20.4	19.8	221.1	109.3
08-1-05-31-00-000-002.003	Knack S of Road/Wond/Eng (part)	16	16	16	221.1	112.4
08-1-05-31-00-000-002.004	Knack S of Road/Wond/Eng (part)	16.8	16.8	15.2	221.1	105.9
08-1-05-31-00-000-002.006	Knack S of Road/Wond/Eng (part)	94.8	83	75.1	221.1	110
08-1-05-32-00-000-008	Steinmann	77.3	77.2	76.6	77.6	109.8
08-1-05-32-00-000-010	Schlechte S/Engelke W of Rt 4 (part)	2.7	2.6	2.5	51.3	95.3
08-1-05-33-00-000-006.001	Albrecht	39.9	39.9	37.1	40.2	93

JARVIS

T.3N.-R.7W.

SEE PAGE 26

Refer to page 59 for keyed parcels



© 2019 Rockford Map Publ., Inc.

7200E 7600E 8000E ST. CLAIR COUNTY 8400E 8800E 9200E Madison County, IL 9600E

2400N
2000N
1600N
1200N
800N
400N
000N

38° 44'
38° 43'
38° 42'
38° 41'
38° 40'

89° 55' 89° 54' 89° 53' 89° 52' 89° 51' 89° 50'

SEE PAGE 18

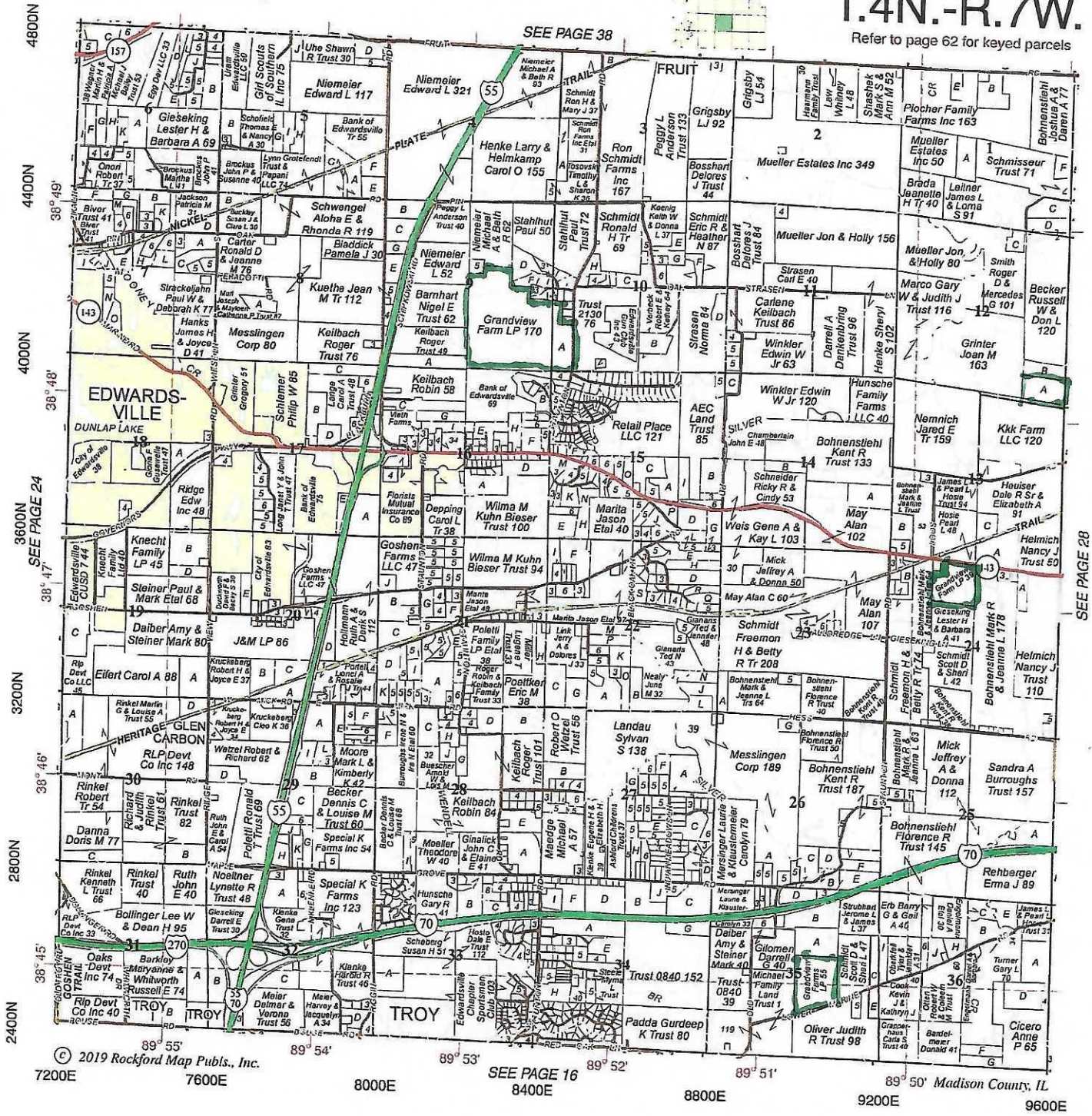
<u>Tax ID#</u>	<u>Farm Production Unit(s)</u>	<u>Total Acres</u>	<u>Tax Acres</u> <u>Cropland &</u> <u>Other Farmland</u>	<u>Cropland</u> <u>Only</u>	<u>Acres in</u> <u>Production</u> <u>In this Primary</u> <u>Farm Unit</u>	<u>Weighted PI</u> <u>Total Acres</u> <u>From Tax</u>
Jarvis Township						
09-1-22-17-00-000-008	Osborn (part)	59.9	59.1	57.6	185.4	121.3
09-1-22-17-00-000-008.001	Osborn (part)	65.5	65.5	64.9	185.4	121.2
09-1-22-20-00-000-001	Osborn (part)	64.9	64.4	62.9	185.4	120.3
09-1-22-20-00-000-001.001	Osborn (part)	4.6	0	0	185.4	0

PIN OAK

T.4N.-R.7W.

Refer to page 62 for keyed parcels

SEE PAGE 38



© 2019 Rockford Map Pubs., Inc.

SEE PAGE 16

Madison County, IL

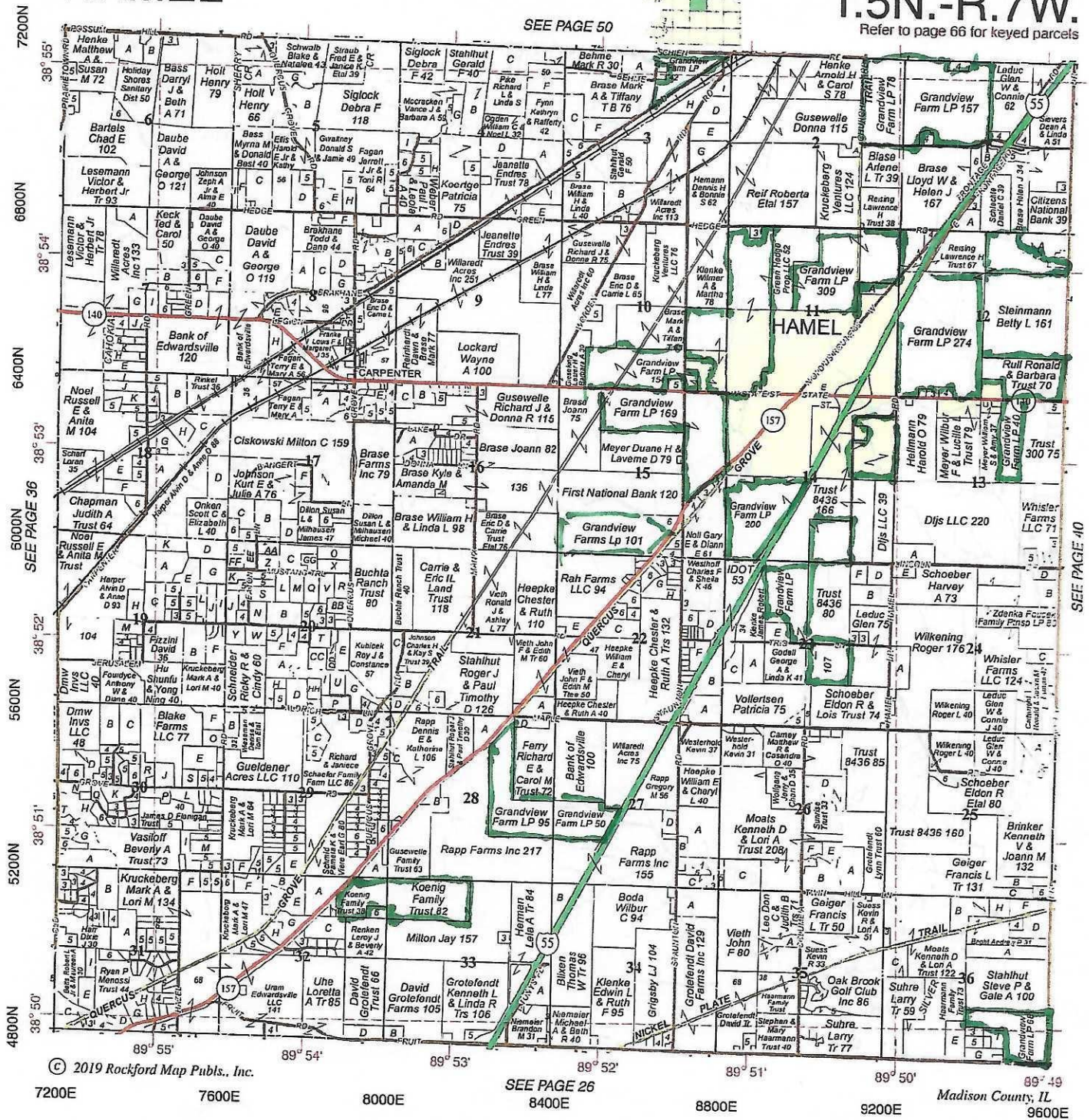
<u>Tax ID#</u>	<u>Farm Production Unit(s)</u>	<u>Total Acres</u>	<u>Tax Acres Cropland & Other Farmland</u>	<u>Cropland Only</u>	<u>Acres in Production In this Primary Farm Unit</u>	<u>Weighted PI Total Acres From Tax</u>
<u>Pin Oak Township</u>						
10-1-16-09-00-000-005	Lerch (part)	94.7	94.7	91.8	194.3	112.8
10-1-16-09-00-000-009	Lerch (part)	75.2	75.2	75.2	194.3	112.7
10-1-16-10-00-000-008	Lerch (part)	28.9	28.9	28.9	194.3	110.8
10-1-16-10-00-000-008.005	Lerch (part)	0.8	0	0	194.3	0
10-1-16-12-00-000-007.001	Bardelmeier (part)	21.8	21.8	21.4	83.8	95.6
10-1-16-24-00-000-003	Weber	39	39	37.4	38.6	101.2
10-1-16-35-00-000-011.001	Flath	54.8	54.8	53.3	54.1	119.6

HAMEL

T.5N.-R.7W.

Refer to page 66 for keyed parcels

SEE PAGE 50



SEE PAGE 40

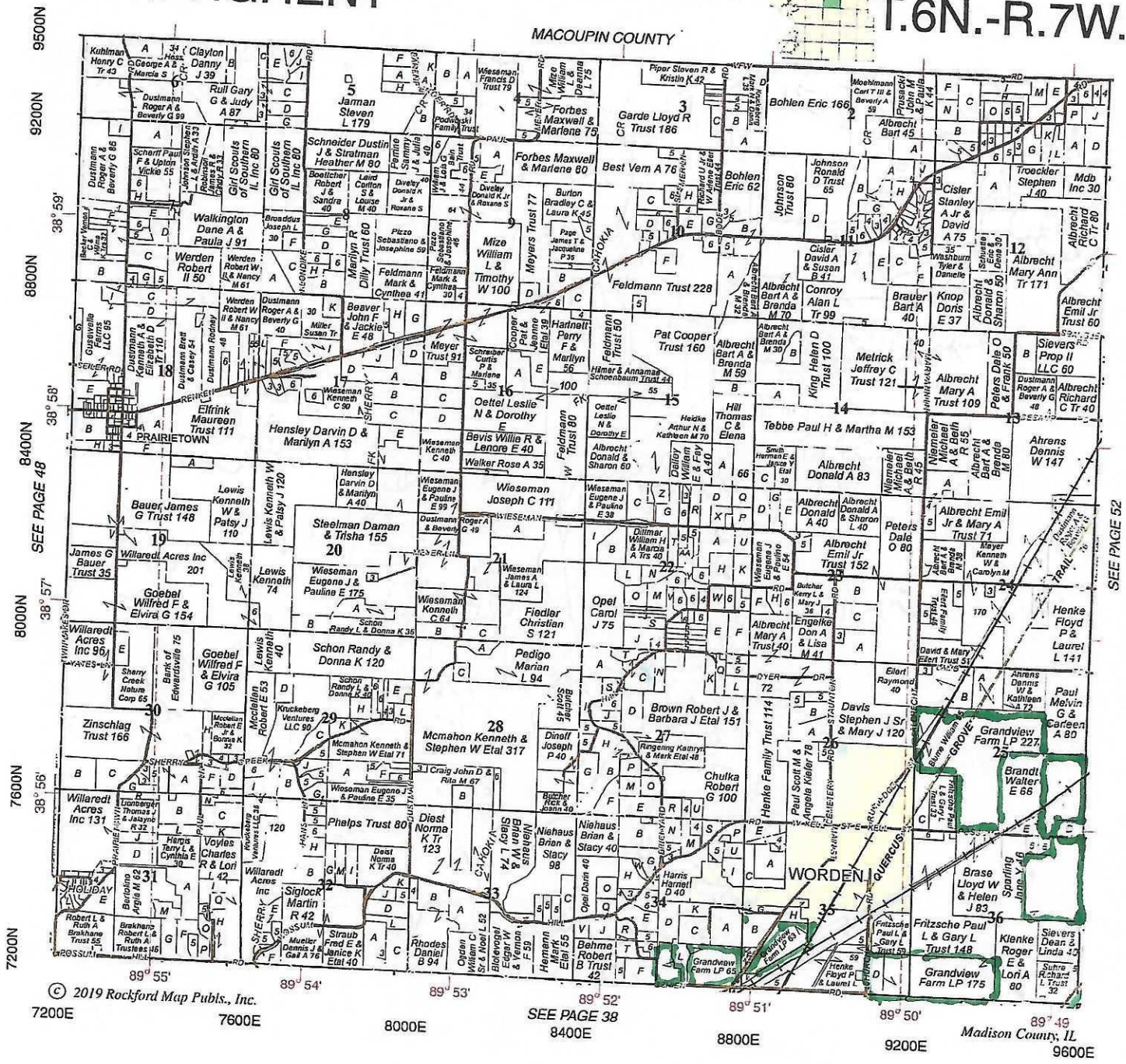
© 2019 Rockford Map Publs., Inc.

SEE PAGE 26

Madison County, IL

<u>Tax ID#</u>	<u>Farm Production Unit(s)</u>	<u>Total Acres</u>	<u>Tax Acres Cropland & Other Farmland</u>	<u>Cropland Only</u>	<u>Acres in Production In this Primary Farm Unit</u>	<u>Weighted PI Total Acres From Tax</u>
Hamel Township						
11-1-10-01-00-000-001.001	Lueker-Blasé South (part)	79.2	79.2	76.7	222.3	114.5
11-1-10-01-00-000-002	Lueker-Blasé South (part)	78.3	78.2	67.8	222.3	108.8
11-1-10-02-00-000-004	Lueker-Blasé South (part)	1.7	1.7	1.7	222.3	108
11-1-10-02-00-000-005	Lueker-Blasé South (part)	76.5	76.5	76.5	222.3	107.8
11-1-10-03-00-000-007	Schien South	41.8	41.8	41.8	42.2	95.5
11-1-10-10-00-000-006	Blume NW	40	40	39.7	52.8	112.2
11-1-10-10-00-000-006.002	Blume NW (part) Blume NE (part)	26.7	25.6	24.7	52.8	97.3
11-1-10-10-00-000-009	Uhe NE, Uhe NW	87.3	83.2	83.2	87.1	114.8
11-1-10-11-00-000-001	Blasé Green Hedge	77.1	74.3	74.3	77.6	101
11-1-10-11-00-000-002	Blume NE, Blume NW (part)	75.2	73.7	73.7	79	100.3
11-1-10-11-00-000-005.004	Poeling Renken, Poeling East	156.6	156.6	155.4	157.3	114.2
11-1-10-12-00-000-003.002	Reising (part)	52.3	51.2	48.8	44.8	95.2
11-1-10-12-00-000-005	Niemitz/Helms (part)	69.7	66.9	66.9	222.3	99.4
11-1-10-12-00-000-005.002	Reising (part)	1.1	1.1	1.1	44.8	103.6
11-1-10-12-00-000-006	Niemitz/Helms (part)	151.9	147.8	147.6	222.3	103.3
11-1-10-12-00-000-010	Rull Central	62.9	62.9	58.4	64.8	109.7
11-1-10-12-00-000-011	Riechmann-Rull	2	2	2	135.5	100.3
11-1-10-13-00-000-009	Oesch	40	40	40	39.5	108.6
11-1-10-14-00-000-012	Sommerfeldt	53.6	50.6	50.6	52	83.4
11-1-10-14-00-000-013	Stahlhut	106.5	106.3	106	105.6	110.5
11-1-10-14-00-000-016	Suhre North	40	40	40	40.2	116
11-1-10-15-00-000-002	Uhe S	78.7	77.4	77.4	73	113.1
11-1-10-15-00-000-003	Blume S, Blume NE (part)	89.5	88	88	81.5	104.2
11-1-10-15-00-000-006.001	Highlander	100.5	97.1	95.9	99.4	105.7
11-1-10-23-00-000-003	Suhre Central	67.8	67.8	67.8	68	109.1
11-1-10-23-00-000-007	Suhre South	39.5	37.5	37.5	37.6	97.4
11-1-10-27-00-000-010.001	Maple Rd South (part)	49.5	48.3	48.3	84	116.8
11-1-10-28-00-000-009	Maple Rd N, South (part)	95.1	95.1	95.1	57.2	122.1
11-1-10-32-00-000-005	Koenig (part)	38.3	37.6	37.3	116.4	111
11-1-10-33-00-000-001	Koenig (part)	80	79.4	79	116.4	122.6
11-1-10-36-00-000-009.001	Rapp W of Hoxey (part)	5	5	5	67.9	97.1
11-1-10-36-00-000-009.002	Rapp W of Hoxey (part)	63.4	63.4	62.6	67.9	93.3

MACOUPIN COUNTY



© 2019 Rockford Map Pubs., Inc.

7200E 7600E

SEE PAGE 38

8000E

8800E

9200E Madison County, IL

9600E

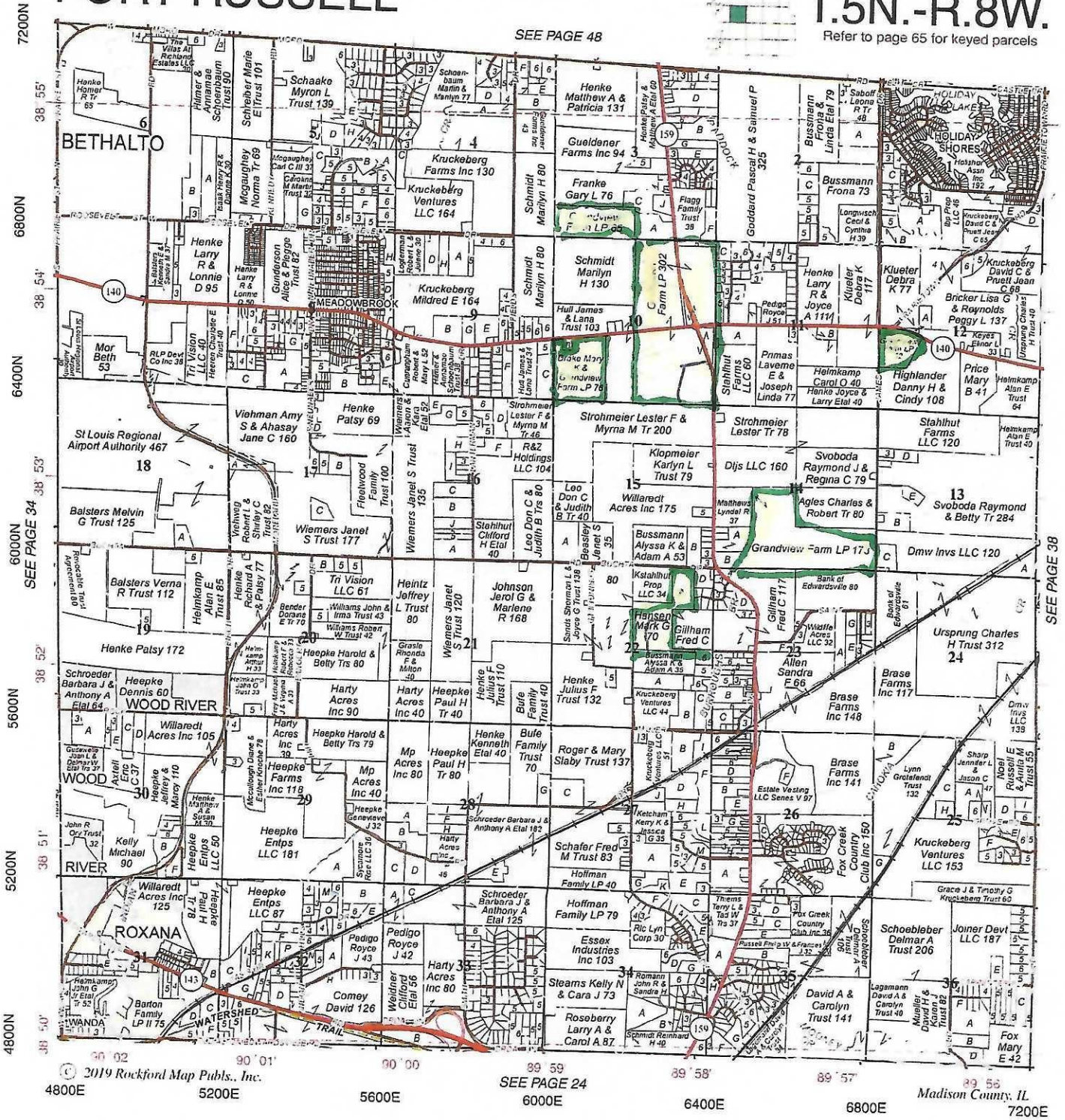
<u>Tax ID#</u>	<u>Farm Production Unit(s)</u>	<u>Total Acres</u>	<u>Tax Acres Cropland & Other Farmland</u>	<u>Cropland Only</u>	<u>Acres in Production In this Primary Farm Unit</u>	<u>Weighted PI Total Acres From Tax</u>
<u>Omphgheht Township</u>						
12-1-04-25-00-000-007	Knack N Central	40	40	40	40.8	110.4
12-1-04-25-00-000-008	Knack West/Davis (part)	80	80	80	120.7	114.5
12-1-04-25-00-000-009	Lamb	54.8	54.8	49	49	109.2
12-1-04-25-00-000-014	Knack West/Davis (part)	40	40	39.2	120.7	116.1
12-1-04-25-00-000-016.001	Knack N of RR, S of RR (part)	37.7	37.7	36.7	112.9	115.2
12-1-04-25-00-000-016.002	Knack N of RR, S of RR (part)	28.8	28.8	28.8	112.9	114.2
12-1-04-34-00-000-026.003	Schien North	65.2	65.2	64.7	64.6	95.1
12-1-04-35-00-000-034.001	Hemann	37.5	37.5	37.5	36.5	106.1
12-1-04-35-00-000-038	Lueker-Blasé North (part)	13	13	12.3	119.5	114.3
12-1-04-35-00-000-039	Lueker-Blasé North (part)	25.5	25.5	24.4	119.5	109.8
12-1-04-36-00-000-004	Knack S of Road/Wnd/Eng (part)	95.5	95.5	95.5	221.1	113.9
12-1-04-36-00-000-007	Lueker-Blasé North (part)	79.9	79.9	78.4	119.5	107.3

FORT RUSSELL

T.5N.-R.8W.

SEE PAGE 48

Refer to page 65 for keyed parcels



© 2019 Rockford Map Pubs., Inc.

SEE PAGE 24

Madison County, IL

<u>Tax ID#</u>	<u>Farm Production Unit(s)</u>	<u>Total Acres</u>	<u>Tax Acres Cropland & Other Farmland</u>	<u>Cropland Only</u>	<u>Acres in Production In this Primary Farm Unit</u>	<u>Weighted P Total Acres From Tax</u>
Ft. Russell Township						
15-1-09-03-00-000-006.001	Franke	64.6	64.6	45.1	58.6	100.1
15-1-09-10-00-000-002	Kruckeberg	76	76	70.5	69.4	106.5
15-1-09-10-00-000-004.001	Goddard NE, NW & S	302.1	302.1	288.1	301.9	108.7
15-1-09-12-00-000-006	Morrison	31.9	31.9	28.6	29.5	99.7
15-1-09-14-00-000-004.001	Ursprung (part)	93.5	91.9	89.9	168.6	116.5
15-1-09-14-00-000-006	Ursprung (part)	80	80	77.9	168.6	111.7
15-1-09-22-00-000-002	Hansen	70	70	69	65.7	118.1